



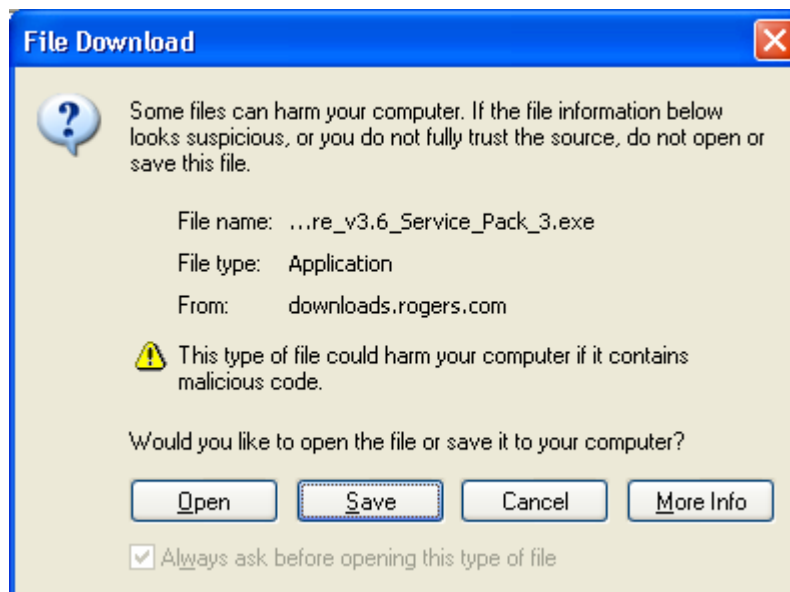
Instructions How to Download & Install BlackBerry Desktop Manager Software

BlackBerry Desktop Software:	Version 3.6.3.11
Language:	English Only (Approx. 22MB) Multilingual (Approx. 67MB)
Compatible with Rogers:	RIM 950 with 4MB of memory RIM 957 BlackBerry 5810 BlackBerry 6210 and 6280 BlackBerry 6710 BlackBerry 7280 BlackBerry 7780
Not Compatible with:	Interactive Messaging and RIM 950 with 2MB

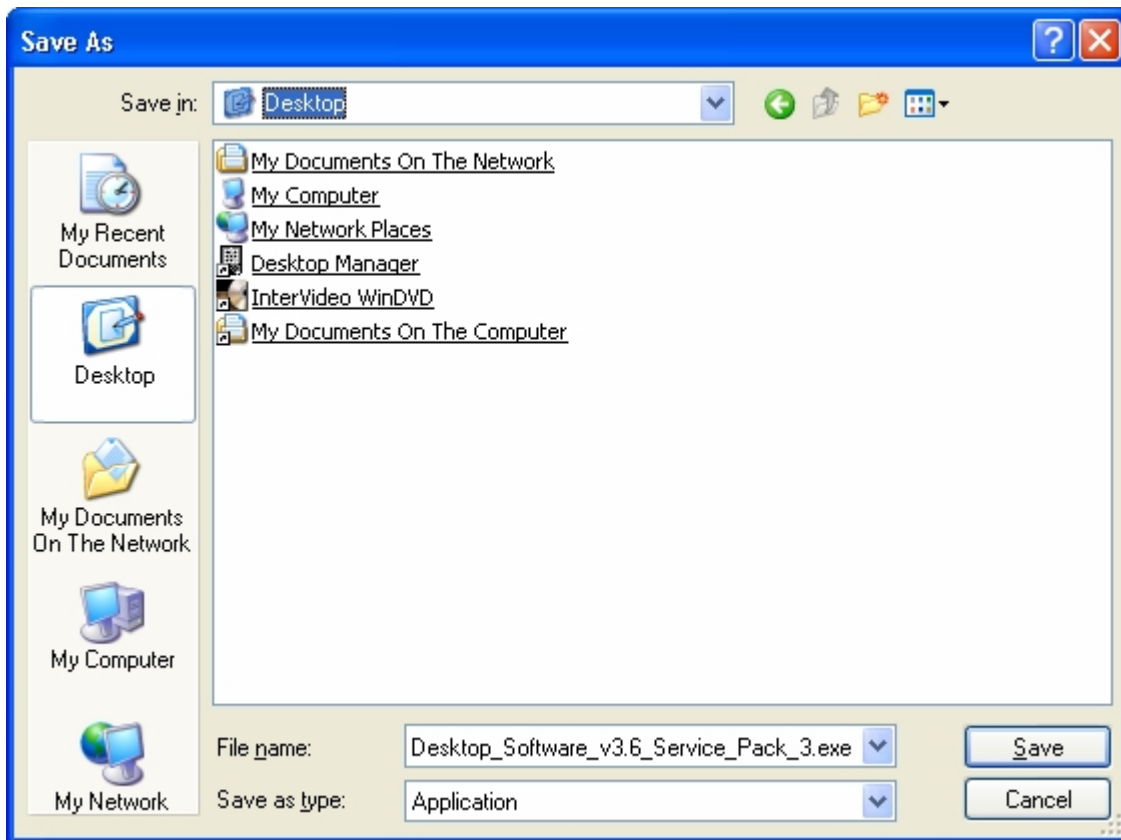
The following is a list of step-by-step instructions on how to download & install the latest certified BlackBerry Desktop Software. Note: There is a **separate file** for the BlackBerry Handheld software.

How to Download BlackBerry Desktop Manager Software

1. Click on the **BlackBerry Desktop Code** Software link located at rogers.com.
2. Click the **Save** option.



3. Save the software to a location on your computer (for example **Desktop**) by selecting the location in the "**Save in:**" field and click the **Save** button.



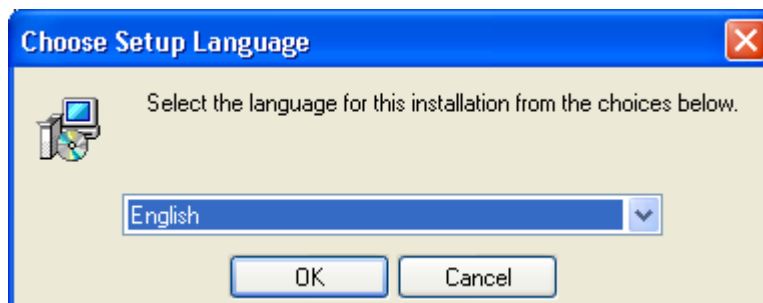
4. When the file is completely downloaded the "Download Complete" screen will come up. Either click on **Open** or **Close**. Open will start the installation right away and the close will close this window and you will need to open the file from the location in which you saved it to begin the installation.

Note: It is recommended that you click **Close** to close the window and read the installation instruction first.

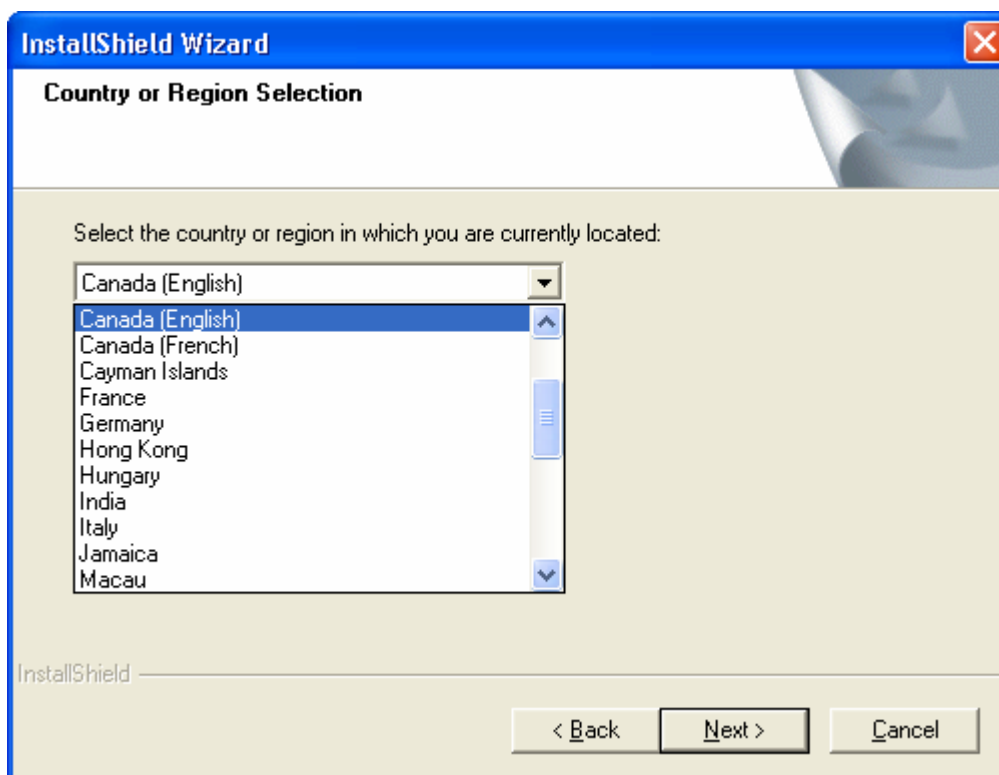
How to Install BlackBerry Desktop Manager

This should take approximately 5-10 minutes.

1. If you are running **BlackBerry Desktop Manager**, exit and close the program before starting the installation of the Blackberry Desktop Manager.
2. Double-click or single-click on the file for **BlackBerry Desktop Software** that you have downloaded from the Rogers website to begin the installation.
3. You will need to wait approximately 1 to 2 minutes as the file needs to extract itself to be ready for installation. ***If you are installing the multilingual version proceed to the next step to select your setup language preference, otherwise proceed to step 5.***
4. The next screen will be the "Choose Setup Language" screen. This will allow you to set the language that will be used for the rest of the installation and the language used with the **BlackBerry Desktop Software**. Please select the preferred language and click **OK**.



5. Click **Next** at the "Welcome Screen" to continue.
6. Next screen Select the country or region in which you are located (e.g. Canada (English), Canada (French), etc.) and click **Next**.



7. Read the *BlackBerry End User Agreement* and if you agree select "I accept the terms in the license agreement" and click **Next**.
8. Enter the *User Name* and the *Company Name* and click **Next**.
9. Read the "Email Integration Option" screen and select the type of email you want the BlackBerry to integrate with and then click **Next**.



10. If you selected the BlackBerry Enterprise Server or Redirector, there will be two more screens. The first is the "Choose Email System" screen and then the "Email Redirection" screen. Please select the options that correspond to you and click **Next**.
11. Click **Next** to accept the default location of the destination folder where all the files will be installed.
12. Click **Next** to accept the default "Program Folder" name.
13. Click **Next** on the "Shortcut Installation Options" screen.
14. The installation will then continue to copy all the needed files to your computer.
15. Click on the **Finish** button to end the install.
16. You can now connect the handheld to your computer and start the desktop software. For more information please refer to your instruction manual.